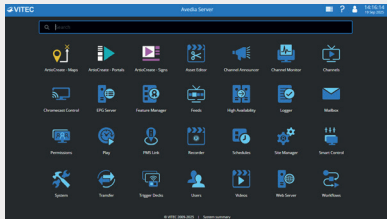




Avedia Platform

All-in-one IPTV & Digital Signage Platform



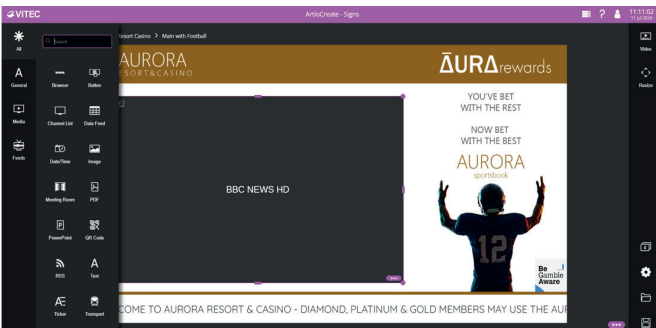
The Avedia Platform is VITEC's powerful system for managing your entire Avedia IP video and digital signage system. Different configurations are available, depending on an organization's requirements. From one location you can control all devices and applications, create interactive portals, create, manage and publish digital signage, create workflows, and much more.

The Avedia platform v11 is comprised of the following applications. Please see the Avedia Server v11 Licensing datasheet for details of which applications are available with which licenses.

ArtioCreate

ArtioCreate is the home of content creation on the Avedia Platform. With the ability to create dynamic digital signage, interactive viewer portals, and helpful wayfinding maps, ArtioCreate's modern drag-and-drop interface makes creating content as quick and easy as it can be.

ArtioCreate Signs



Create uniquely branded, full HD and 4K digital signs with drag-and-drop simplicity. Choose from the following on-screen elements to build digital signage layouts.

Browser

- Display simple HTML pages

Button

- Create an interactive button to switch between layouts using compatible touch screens

Channel List

- Incorporate a channel feed into a sign, selectable by remote control

Content Playlist

- Add a content playlist feed containing video assets, images and QR codes to a sign

Date/Time

- Multiple day/month/year formats available: HH/MM, HH/MM/SS, 12/24hr time formats
- Display the time in various different time zones

Data Feed

- Incorporate data feeds created using the Feeds app into a sign
- Dynamically updated when data feed changes, keeping signs up to date without the need to republish

Image

- JPEG, PNG, GIF, SVG
- Multiple-image playlist with configurable durations
- Add a range of transitions to an image playlist

Meeting Room

- Compatible with Microsoft Office 365
- Display now-and-next information at room entrance
- Display summarized list of meetings for entire venue

PDF import

- Import single or multi-page documents. Each page is converted to an image

PowerPoint™ import

- Import single or multi-slide presentations. Each slide is converted to an image

QR Code

- Create QR codes to link to websites, third party ordering systems, and more

RSS feeds (ticker)

- Upload custom fonts to use with RSS
- Set feed scroll to left or right

Text

- Upload custom fonts to use with text elements
- Set text scroll to left or right
- Single or multi-line text

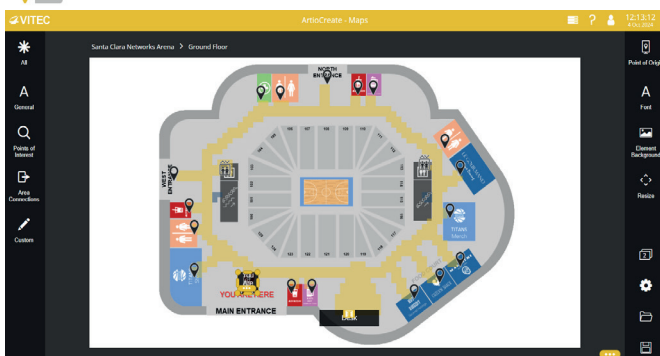
Ticker

- Upload custom fonts to use with text ticker
- Set ticker scroll to left or right

Transport

- Display status of London Underground, Overground and Tram services

ArtioCreate Maps



Multiple Map Areas

- Create maps of multi-floor buildings or multi-building campuses

Points of Interest (POIs)

- 30 pre-created POIs
- Create unlimited custom POIs
- Choose between boundary marking, for square or rectangular POIs, or access point marking, for irregular-shaped POIs

Video

- IP video streams (up to and including 4K)
- Local content stored on device
- Supported video formats:
 - Transport Stream (.m2t, .ts)
 - MP4 (.mp4), Matroska (.mkv), AVI (.avi) and Windows Media Video (.wmv) formats are transcoded to TS format on upload
- Add multiple videos to create a video playlist
- Add up to four video elements in a layout (resolution and playback device-dependent)

Video List

- Incorporate a video feed into a sign, selectable by remote control

Wayfinding (additional license required)

- Incorporate maps created in ArtioCreate – Maps into signs, navigable by compatible touch-screens
- Configure layout and color of side bar, background, route line, fonts and more

Weather

- Up to five-day forecast
- Display weather in multiple locations Celsius/Fahrenheit maximum/minimum temperature display
- Select from multiple languages for displayed text

Additional Features

- Configurable permissions
 - Allow users or profiles to edit only certain signs
 - Allow users or profiles to edit only certain elements within certain signs
- Moment of Exclusivity
 - Enables instant, time-limited changes to signs or portals to notify viewers of important events

ArtioCreate Maps is used to create dynamic, interactive wayfinding maps which can be incorporated into a sign, and then accessed using a compatible touch-screen device.

Accessible Routes

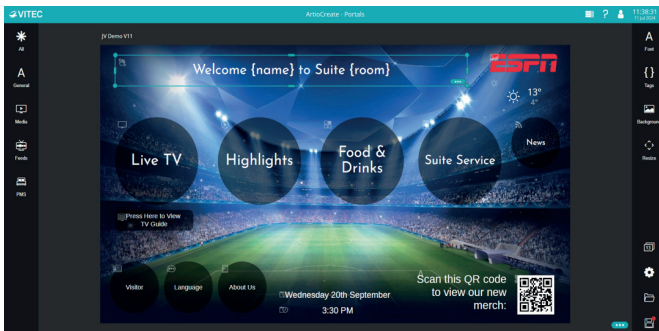
- Define which routes are accessible or otherwise, for users with impaired mobility

Path Tool

- Draw paths using the size-configurable path tool, and erase unwanted paths using the eraser

Area Connections

- Connect map areas using stairs, elevators, corridors and more
- Create unlimited custom area connections



Browser

- Display simple HTML pages

Button

- Create an interactive button to jump to a specified view using the remote control

Channels

- Display a channel feed in a grid layout allowing viewers to select and play TV and radio
- Import and use easily recognizable channel icons
- Collate similar channels into groups
- Choose to play a selected channel when the element is opened
- Select a different audio language on a live channel
- Support for subtitles and closed captions

Chromecast (built-in)

- Chromecast Built-in supported on Sony BRAVIA® Professional Displays

Content Playlist

- Add a content playlist feed containing video assets, images and QR codes to a portal

Data Feed

- Incorporate data feeds created using the Feeds application into a portal
- Dynamically updated when data feed changes, keeping portals up to date without the need for republishing

Date/Time

- Multiple day/month/year formats available: HH/MM, HH/MM/SS, 12/24hr time formats
- Display the time in various different time zones

Destinations

- Incorporate destinations feeds for cruise/vessel-specific environments

ArtioCreate Portals is VITEC's powerful IPTV middleware which delivers a premium on-screen viewing experience. It uses drag-and-drop functionality to create interactive portals that can be fully customized, without the need for programming skills.

Form Generator

- Create interactive forms for ordering items such as room service, or booking activities or excursions
- Add selectable elements to the form: date picker, select list, text input, time picker
- Specify email address where the completed form is sent

Guest

- Incorporate data from a property management system (PMS) and display on-screen:
 - Account
 - Name
 - Room
 - Bill total
 - View guest bill
- Check out from the in-room TV

Guide

- Display an EPG with optional preview of the selected program
- Up to 14 days program schedule information

Image

- JPEG, PNG, GIF, SVG
- Multiple-image playlist with configurable duration
- Add a range of transitions to an image playlist

Info Pages

- Create scrollable text or web information pages

Languages

- Allow a user to select the portal language
- Add languages as required
- Automatic channel sorting by language

Mailbox

- Send messages to individual, grouped, or all displays via the Smart Control application
- Easily display emergency message on screens if required, while muting displays and blocking remote controls
- Create a variety of message templates in different languages to allow for quick and easy messaging
- Recall sent messages and create message schedules
- Integration with Oracle OPERA and Infor HMS property management systems

Patient

- Display patient information taken from compatible HL7 hospital information systems
 - Account ID
 - Age
 - Attending Consultant
 - Name
 - Nationality
 - Room

PDF Import

- Import single or multi-page documents

PowerPoint™ Import

- Import single or multi-slide presentations

QR Code

- Create QR codes to link to websites, third-party ordering systems, and more

RSS Feeds (ticker)

- Upload custom fonts to use with RSS
- Navigate between RSS feeds to view information with remote control

Text

- Upload custom fonts to use with text elements
- Set text scroll to left or right
- Single or multi-line text

TV Source

- Allow viewer choice of TV input, enabling use of personal devices - laptop, games console, etc.
- Provide easy access to YouTube, Airtime and Spotify, or custom applications
- Cast to a Chromecast dongle or Google TV streamer

Video

- Display a video or channel within an element

Video Link

- Create a link to a full screen video

View

- Create tiers within a portal

VOD

- Display available films/video content allowing viewers to select items as required
- Editable title, description, image, expiry date, trailer and tariff (if available)
- Select a different audio language for VOD
- Can be linked to PMS purchases
- Supported video formats:
 - Transport Stream (.m2t, .ts)
 - MP4 (.mp4), Matroska (.mkv), AVI (.avi) and Windows Media Video (.wmv) formats are transcoded to TS format on upload

Weather

- Up to five-day forecast
- Display weather in multiple locations Celsius/Fahrenheit maximum/minimum temperature display
- Select from multiple languages for displayed text

Welcome

- Create a customizable welcome message

Additional Features

- Configurable permissions
 - Allow users or profiles to edit only certain portals
 - Allow users or profiles to edit only certain elements within certain portals
- Video Background
 - Add a video as the background to a portal

Control Applications

The Avedia Platform Control applications are powerful applications used for management and control of various parts of the system.

Channel Applications

Channels

- Add, manage and display all channels in the Avedia Server channel list
- Reduce disruption - specify one or more alternative channels to play in the event of stream failure

Channel Announcer

- Enable VITEC IPTV devices to discover third-party channels
- Change the SAP address for announced channels

EPG Server

- Collect and manage the channel data used to display Program Guides within portals
- Aggregate EPG data from VITEC head end and XML sources
- Associate imported XML data with any channel
- Create organization-specific EPGs

Video on Demand Applications



Videos

- Upload and manage recordings and media assets for use in Signs, Portals and the Play application
- Manage media assets for on-demand availability up to 550 Mbps (depending on bandwidth option) using HTTP Live Streaming (HLS)



Play

- Create and manage custom IPTV channels to stream media from the Avedia Server (up to 550 Mbps depending on bandwidth option)
- Drag and drop interface to set up video assets or video feeds for Play channel
- Default asset feature ensures channel always present for end users



Recorder

- Create and manage recordings from network channels (up to 400 Mbps depending on bandwidth option)
- Create instantaneous, scheduled or continuous recordings



Transfer

- Asset and recording transfer control options
- Transfer recordings automatically to Avedia Servers, FTP servers or file shares

Control & Event Applications



Smart Control

- Graphical control and management of viewing end-points
- VITEC 93-, 94-, 95-series and EP6 End-Points
- Samsung, LG, Philips and Sony SOC
- Option to view/control end-points on a floor plan view
- Apply control commands to individual or groups of smart displays and end-points
- Searchable log of successful, failed and timed-out commands
- Grouping and drag-and-drop-based management
- Search for groups, commands/workflows, portals, messages, signs or signage schedules



Workflows

- Specify and save an action, or sequence of actions, as a workflow
- Display Moments of Exclusivity on a device or group of devices for a specified period of time
- Create workflow triggers to automatically trigger a sequence of events when an event takes place, and specify priorities
- Create schedules for individual or recurring workflow triggers
- Create emergency mode triggers which mute displays/block remote controls for the event duration
- Apply workflows to devices using Smart Control
- Restore state of device to previous pre-workflow state
- Use groups to process several triggers simultaneously
- Create trigger decks for a quick and convenient way to activate triggers and groups of triggers



Chromecast Control

- Centrally manage Chromecast usage and view usage statistics and status
- Includes Chromecast dongles, Google TV streamers and Chromecast built-in



Feeds

- Channels/Videos - Create channel or video feeds for use with Portals and Signs
- Content Playlist - Create content playlist feeds containing video assets, images and QR codes, with configurable display time for images and QR codes
- Data Connector - Import data from various external sources, manipulate this data, and dynamically update outputs
- Meeting Rooms - Create a meeting room feed to show meeting room use and availability in Signs
- Destinations - Create an informational feed for a group of destinations



Trigger Decks

- Access trigger decks created using the Workflows application
- Launch workflows or workflow groups from a PC or mobile device

Server & System Applications



Site Manager

- List, order, filter and search for devices, groups, configuration files and firmware
- Add devices manually if required
- Apply firmware updates, name and location changes to VITEC devices and import/export device configuration
- Download VITEC IPTV device estate details (CSV)
- Create a Location view using a floor plan and add devices



Channel Monitor

- Monitor the status of IPTV channels on the network
- Automatic discovery of channels using SAP
- Real-time view of channel status
- Monitor channel performance including Bitrate, Uptime, Continuity, TEI & Sync errors



Feature Manager

- Manage and control licensing to enable extra features precisely as required



Logger

- Capture historical IPTV system information for performance and event monitoring
- View detailed logs of server activity
- Control Avedia Server syslog function
- View logs from external devices

High Availability

- Ensure minimal interruption of the following in the event of the active Avedia Server being unable to reach the network:
 - Portals, signs, schedules and maps
 - Feeds, videos and channels
 - User accounts, profiles
 - Active Directory groups & device groups
 - Permissions
 - Workflows, triggers
 - Site Manager - settings, device notes, device groups & maps
 - Smart Control
- For use with Avedia Server, ArtioCreate Portals and ArtioCreate Signs
- Ensure minimal interruption to streaming of live TV and video in environments where uninterrupted service or access to information is key
- Send email alerts when cluster status changes

Permissions

- View which items users/profiles can access, and which users/profiles have access to individual items
- Used as part of the VITEC Content Protection Solution to add channels to groups, and groups to channels

PMS Link

- Provides Avedia Server compatibility with the following industry-standard Property Management Systems:
 - Oracle OPERA (Formerly MICROS-Fidelio)
 - Oracle Hospitality Cruise (Formerly Fidelio Cruise)
 - Agilysys Visual One
 - Infor HMS
 - protel On-Premise
 - SAPI
 - innQuest roomMaster
 - Cloud Solutions VIDA Hospital Information System (HL7)

Technical Specification

- System
 - Avedia Server software based on Rocky 9 operating system
- Management
 - HTTP/HTTPS web interface for Avedia Server administration
 - Supported browser: Chrome®
 - Access the VITEC Server Admin Program using SSH or serial RS232 port on c15xx series platforms
- Network
 - Linux IPv4 stack
 - DHCP or Static IP addressing (recommended)
 - Supports HTTP proxy
 - Ethernet link aggregation & redundancy
 - Firewall enables separate streaming and administration/application interfaces

System

- Monitor and manage the core functions of the Avedia Server
- Monitor and control services running on the Avedia Server
- Configure network settings and view network statistics
- Carry out Avedia Server system maintenance such as upgrades or import/export configurations

Users

- Create and manage Avedia Server users, configure access permissions including security and Single Sign On (SSO) for Avedia Server and Active Directory users
- Create and edit user accounts
- Set up profiles for groups of users
- Configure Active Directory (LDAP) integration and Single Sign On settings
 - Set up device and user access control
 - Configure HTTPS secure server and Single Sign On access
- Web Server
 - Upload and host a simple website on the Avedia Server to provide information to end users

- Protocols
 - IP (RFC 791), TCP (RFC 793), ARP (RFC 826), DNS (RFC 1035), DHCP (RFC 2131), ICMP (RFC 792), TFTP (RFC 1350), HTTP (RFC 616), SYSLOG (RFC 3164), NTPv3 (RFC 1305), NTPv4 (RFC 5905), SAP (RFC 2974), SDP (RFC 4566), SSH (RFC 253), SNMP (v1, v2c -RFC 1901), SSDP, LDAP (RFC 4511)