

WallControl 10

Advanced video wall control technology



Advanced Video Wall Control

Video wall deployments require a number of users to interact simultaneously with a large number of inputs across multiple screens to get the data where it is needed.

WallControl 10 provides users with the interface required to quickly and effectively manage content that includes video captures, IP streams and local applications. Users are able to place any input source on any part of the video wall using a simple drag and drop operation. Precise positioning of each piece of content can be achieved using the mouse and keyboard, or via the revolutionary template tool.

The Template Tool allows users to not only place their own templates across an entire wall, which evenly distributes content, but they can also apply a template to an individual window so multiple windows can be grouped together and moved as a single item.

WallControl 10 enables you to save and recall layout files quickly and easily, ensuring the video wall is always showing the correct information.

Simple Interface - Advanced Features

WallControl 10 allows any piece of content, whether from a capture card, IP via the PC processor, an ActiveSXQ card, or local media to be placed anywhere on a video wall. WallControl 10 also allows administrators to deploy multiple unique videos walls from a single VSN system.

User rights management enables administrators to determine which users on their network can access each wall, and specify what level of permission each user will have. Restrictions can include the number of sources and layout files available to each user, which templates they can deploy, and whether the desktop capture is available or not.

Features & Benefits

- Connect to the video wall from any compatible browser
- Operators can manipulate sources from their workstations using KVM functionality
- Advanced web page control gives operators the ability to view and manipulate web pages
- Multiple walls can be delivered by a single VSN system
- User rights management can be deployed on each VSN system
- Create templates that subdivide the video wall
- Crop both SQX and Vision sources
- Create banners with text or RSS feed content to scroll across the video wall

Web Interface

The web interface allows users to connect to the video wall from any compatible browser. As long as the browser and the VITEC wall controller are on the same network, users can connect via a browser on their laptops, phones or tablets. Users can select which wall to change and are then presented with available layouts. They can use the 'Snapshot' feature to view an image of what is being displayed on the wall.

The web interface is compatible with Chrome and Safari browsers. System administrators can also choose which walls can be accessed via the web interface, giving the ability to disable web access on sensitive walls.

Keyboard and Mouse functionality

Keyboard and Mouse (KVM) functionality gives WallControl 10 operators the ability to manipulate sources from their workstations. In Command and Control environments, sources being captured may derive from unmanned workstations processing data for display onto a wall.

With WallControl 10 software, operators can use their local keyboard and mouse to manipulate the remote machine. This allows high-quality capture to be placed on a video wall, whilst the KVM is performed locally via an IP-based Agent window.

Advanced Web Page Control

Advanced web page control gives operators the ability to view and manipulate web pages. The advanced functionality includes the auto-refresh of web pages allowing up-to-the-minute monitoring, vertical and horizontal scrolling, positioning the web page view, and a zoom function to focus on the most important sections of a web page.

Multiwall

Multiple walls can be delivered by a single VSN system. Walls in separate areas of a building can be driven independently from a single location.

Multiple walls can be easily set up using the wall creator wizard, and if required each wall can be assigned a unique set of sources or video resources.

User Rights Management

User rights management can be deployed on each VSN system. Users can be assigned roles on a per-wall basis based on their Windows login, with each role allowing access to a subset of sources or layout files. A user may have unrestricted access on Wall 1, but be confined to pre-determined layouts on Wall 2.

Templates

WallControl 10 allows users to create templates that subdivide the video wall. Users can drop content into each area that automatically then fills the template space. Users can also use templates on active Windows to create groups of content that can all be moved, resized and managed together.

Cropping

WallControl 10 includes the ability to crop both SQX and Vision sources by selecting the area of interest from a snapshot of the source. Crops can be saved for instant deployment to the video wall, and as part of a layout file.

On-Screen Display (OSD)

The On-Screen Display allows users to place text over Vision and SQX windows so viewers can quickly identify what they are seeing on the video wall. The OSD also allows users to add variables to the window such as Time and Date, Frame Rate and Source resolution, as well as being able to set the text size, color and font. OSD is available on Windows 7 and Windows 10 using the WDDM driver.

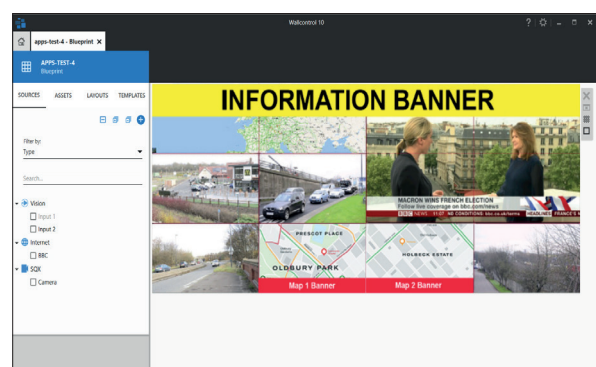
Borders And Frames

Borders and Frames allow users to add a color surround to the images on the video wall. Adding a border surrounds the content with a chosen color irrespective of the aspect ratio, whilst adding a frame will add a color around the window on the video wall. Borders and frames can be used to signify the importance of a piece of content, to quickly identify the source type or to categorize sources that may look similar but are monitoring different subsystems.

Borders are available on Vision and SQX windows; frames are available on all windows. Borders and frames can also be controlled via the Command Line Interface.

Banners

Users specify the banner text (either by entering manually or by specifying an RSS feed), text scrolling direction (or setting as static) and the banner background color. Transparent backgrounds are also supported.



Asset Management

Once created, banners can be saved in the new Asset Manager, included as part of WallControl 10 Pro, for re-use in different layouts across multiple video walls. Configured windows (with crops, OSD, borders and carousels) can also be saved as an asset for quick recall as needed.

SQX Decoding

Playing many locally stored media files can be difficult due to processor limitations. However, WallControl 10 has the ability to decode media files using ActiveSQX cards. By assigning media to "Decode via SQX", VITEC and WallControl 10 offer more scale, allowing many media files to be decoded by SQX cards at once. Each ActiveSQX card is capable of decoding six Full HD videos or three 4K 30 videos or a single 4K 60 video that uses H264 compression, to display more media onto the wall simply add another ActiveSQX card into the system.

Specifications

Compatibility

- Windows 11

Decode Support

- H.264 MPEG4 (Part 10 AVC)
- H.265 MPEG-H (Part 2 HEVC)
- MPEG4 Part 2 & MJPEG

Internet Protocol

- IPv4, IPv6

De-Interlacing

- Supported

Streaming Protocols

- HTTP, RTSP & MPEG2-TS support Multicast & Unicast

Ordering information (P/N)

- 19417 - Wall Control 10 - License - Standard
- 19356 - Wall Control 10 - License - Pro

Source Streaming

WallControl 10 Pro users can now stream captured Vision sources over the local network to a VITEC ActiveSQX card or any standard RTSP decoding software (such as VLC) for remote monitoring, processing or recording.

Any Source Anywhere

WallControl 10 allows users to position any piece of content anywhere on the video wall. The content can cross multiple screens, or multiple pieces may be seen in a single screen. WallControl 10 allows content to be received from capture cards, IP streams, VNC sources, local videos and image files as well as allowing browser windows to be opened and positioned on the wall.

IP Decode

WallControl 10 enables users to effectively decode IP streams using either the onboard processor or dedicated VITEC ActiveSQX decode card(s).