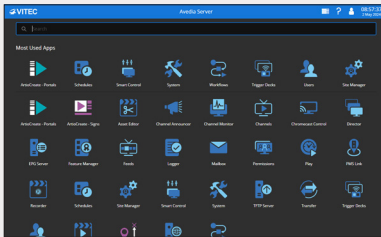


Avedia Server Virtual Platform v1600

Host Avedia Server on a virtual platform



The Avedia Server virtual platform option comprises software packaged as an ISO file on a USB memory stick and licensed for a fixed MAC address supplied by VITEC®.

Avedia Server Virtual Platform Requirements

- Processor: Octa (8) core Xeon CPU (or equivalent) minimum
- RAM: 8GB minimum
- Platform: VMware ESXi 7.0 (minimum) & Microsoft Hyper-V (Windows Server 2016 minimum)

Disk requirements

- Single disk: 1TB (minimum)
- Two disks (smaller disk used for system)
 - System: 200GB minimum
 - Content: 800GB minimum

In the Box

- Avedia Server Virtual Platform Software (USB memory stick)
- EULA document

Note:

- VITEC does not support bare installs on non-VITEC hardware, only a virtual machine install is supported.
- Avedia Server performance under a virtual machine cannot be guaranteed as it depends on factors outside VITEC's control, for example, the physical machine used, virtual machine configuration parameters, number of other virtual machines running on the same hardware, etc.

Features & Benefits

- Virtual machine reduces server hardware expenses
- Lowers power and energy costs
- Software packaged as an ISO file
- Supplied on a USB memory stick
- Licensed for a fixed MAC address

- VITEC strongly recommends that the VITEC virtual machine is the only VM running on the physical machine for any AvediaServer virtual machine installation which is required to run VoD, Play or Record. Please contact your VITEC Solutions Consultant to discuss VM requirements.
- For any support incidents associated with a virtual machine installation, VITEC will need to reproduce the fault on known VITEC hardware to exclude performance or other issues potentially associated with the customer's virtual machine.

Ordering Information (P/N)

- 18350 v1600 Avedia Server virtual platform - VM licence

The table below provides more information about each platform:

Chassis and Software Module Compatibility																
AvediaServer Platform	Core Software Modules			Bandwidth Options								Hard Disk RAID 10 Options				
	m8105	m8115	m8365	110 Mbps	220 Mbps	550 Mbps	1000 Mbps	2000 Mbps	3000 Mbps	6000 Mbps	4TB	8TB	16TB	24TB	32TB	48TB
c1520	✓	✓	✓	✓	✓											
c1565	✓	✓	✓	✓	✓	✓	✓	✓			✓	✓	✓	✓		
c1585	✓	✓	✓	✓	✓	✓	✓	✓	✓	✓		✓	✓		✓	✓
v1600	✓	✓	✓	✓	✓	✓	✓	✓	✓	✓						